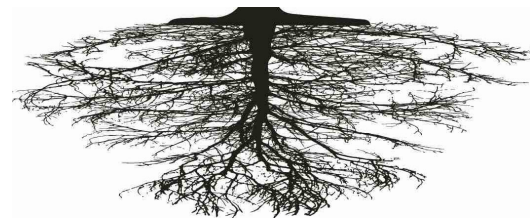


DREAM – LEARN - ACT



Road Map of the Day



**Root
Causes**



Barriers



Ingredients



Vision





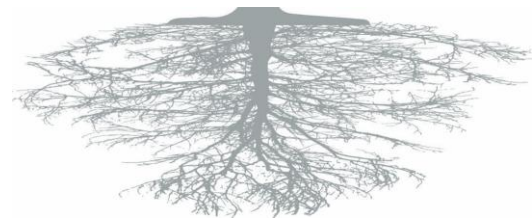
Art by Rukana

Ground Rules

1. Be honest, creative and think outside the box
2. Everyone in this room is committed to children and families, has the best intentions, and has something this group needs to move forward
3. There are no bad ideas.
4. Let's have fun!



Road Map of the Day



**Root
Causes**



Barriers



Ingredients



Vision

Brainstorming Instructions

1. Use the **blue** worksheet to brainstorm what you would see in children and families if we were successful

Health Impacts

- Example: babies being born at a healthy birth weight

Education Impacts

- Example: children are ready to learn when they enter kindergarten

Economic Security Impacts

- Example: families have stable income

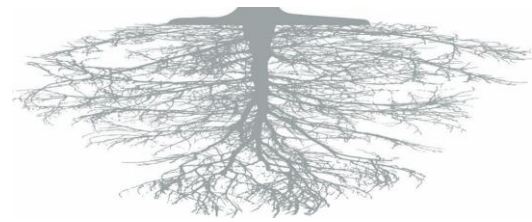
Other Impacts

- Anything else your group thinks is important.

Brainstorming Instructions

2. Share your ideas with your group
3. Pick a few of the things your group discussed and write them in big letters on the **BLUE** cards in the middle of your table. Also write your table number on each of the cards.
4. As you finish each card, hold it up and one of the assistants will bring it up to the wall.

Road Map of the Day



**Root
Causes**



Barriers



Ingredients



Vision

Vision Ingredients

Imagine it's 10 years from now and we've brought all these vision impacts into reality...

A reporter is coming to town who wants to know...

- **How** did we do it?
- What did our community **put in place** that made it possible to achieve the vision we just listed on the wall?

Brainstorming Instructions

1. Take out the **YELLOW** worksheet in your folder.
2. Describe what would be place to help us achieve our vision.

Small Group Instructions

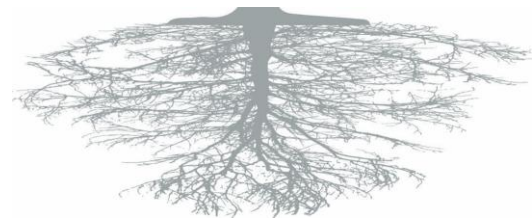
1. Have everyone share the **top 4 ingredients** they think the community would need to put in place.
2. As a group **select 5-7 ideas** that are the most critical to achieving the vision.
3. Use a marker to write each of these ideas in big letters on a **separate YELLOW sheet**.
 - Write the ideas in **6 words or less**.
 - Write your **table number** on each of the cards.

Reflection

If we started our collective efforts by working towards these impacts, would this make a difference in our community?

Is this focus something you could get behind?

Road Map of the Day



**Root
Causes**



Barriers



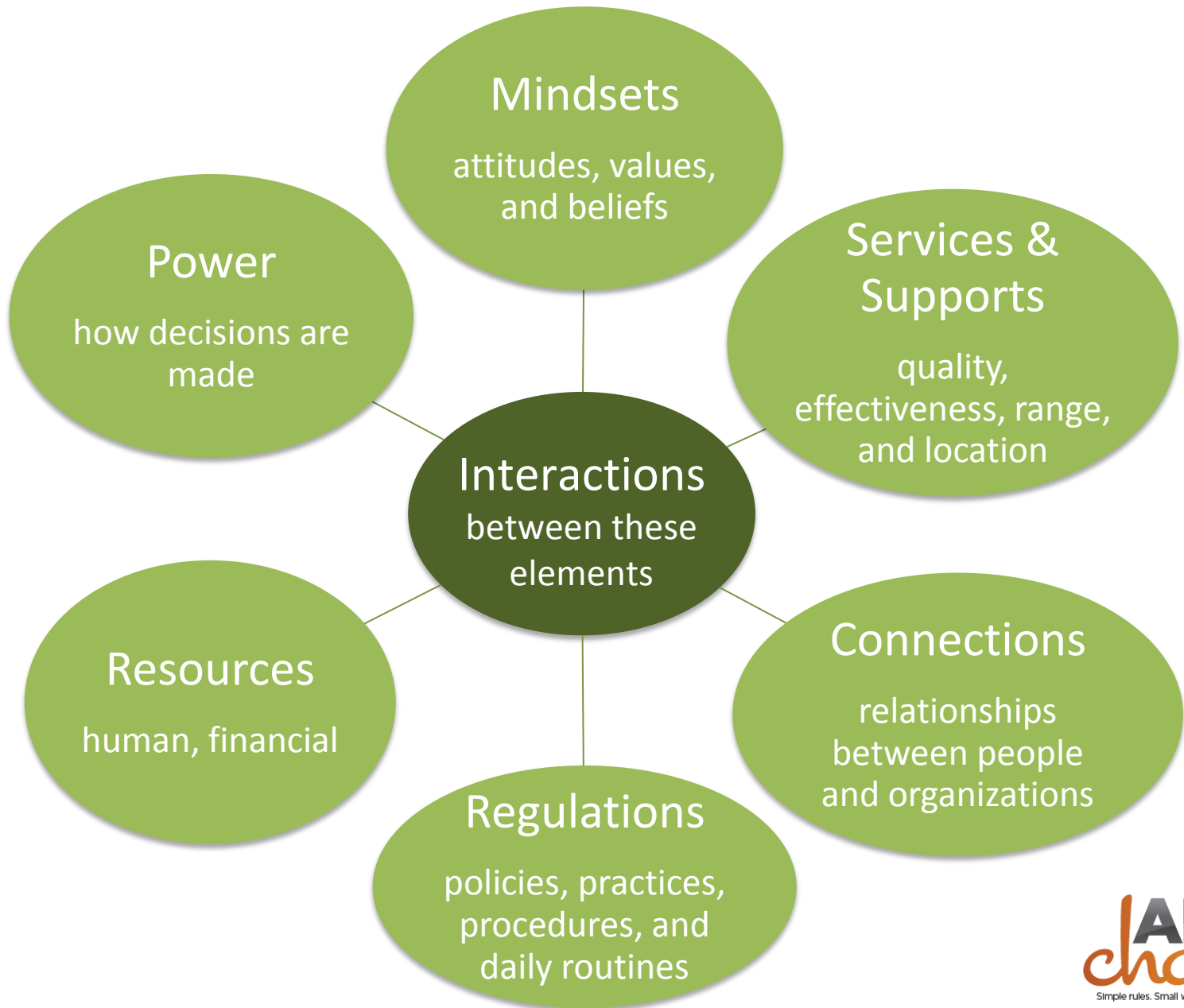
Ingredients



Vision

Why are the vision ingredients not currently in place today in our community?

What are the issues, obstacles, constraints or barriers that are getting in the way?



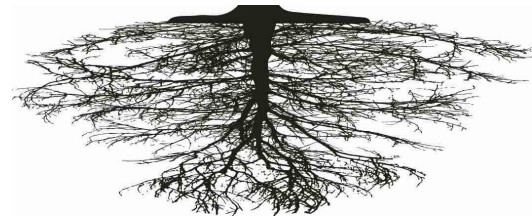
Brainstorming Instructions

1. Take out the **GREEN** worksheet from your folder.
2. Write one vision ingredient in each of the rows on the sheet.
3. Identify at least one obstacle from your personal experience or observation that is getting in the way of achieving each ingredient.

Small Group Instructions

1. Have every group member share the **4 most critical barriers on their sheet.**
2. As a group **select 5-7 barriers** that are the most important for this community to address to reach its vision.
3. Use a marker to write each of these barriers in big letters on **separate GREEN cards.**
 - Write the ideas in **6 words or less.**
 - Write your **table number** on each of the cards.

Road Map of the Day



**Root
Causes**



Barriers



Ingredients



Vision

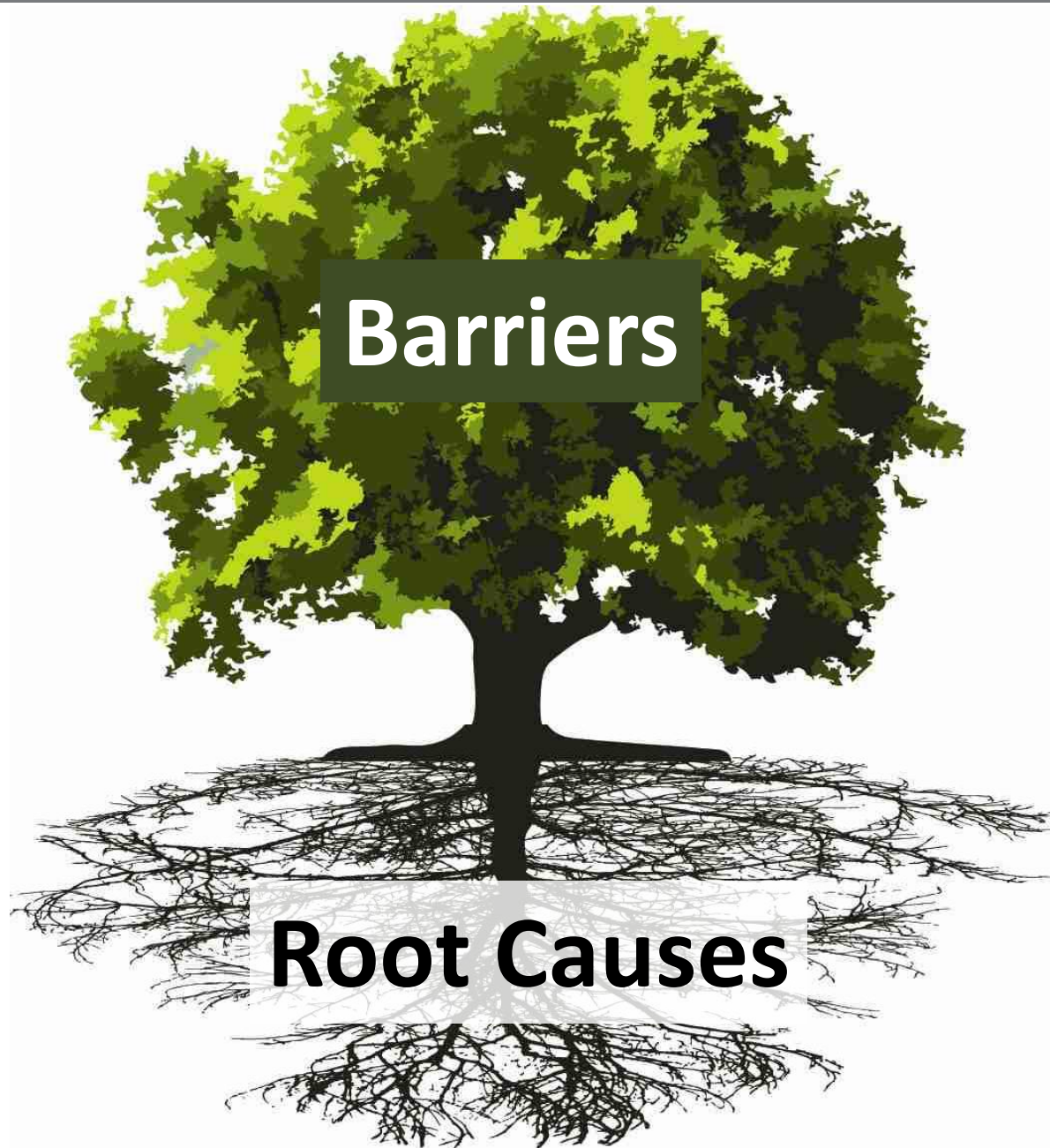
Move to a Barrier

1. Move to the barrier you feel you have the most interest in tackling.
2. When you get to the barrier, introduce yourselves to the other people in your new group.
3. Write your names on the page attached to the flip chart paper so we can keep track of who is in your team



Art by Rukana

What are some of the underlying
root causes that create this barrier?



Barriers

Root Causes

Barrier: Services and supports are difficult for families to access

Why?

Services are at **times** that don't fit families' needs

Why?

Services are at **locations** hard to get to by families

Why?

Families and providers **lack awareness** of what services are out there

Why Here?

Current directories are not user friendly or comprehensive

Why Here?

No professional development for providers

Root Cause Instructions

1. Write your barrier at the top of the flip chart
2. Brainstorm a list of reasons for why this barrier exists.
3. As a group identify the 2 reasons you are most interested in exploring because they are **feasible** to address and will have **powerful** effect in this community.
4. Ask “why here” questions for these two reasons.

Learning Expedition Questions

1. Did the other teams identify any additional issues that your group should consider adding into your root cause analysis?
2. Were there any root causes you saw on multiple teams' flip charts?

Small Group Discussion

1. Have each member share what they learned from the learning expedition and talk about how to incorporate these ideas into your root causes.
2. Take a look at the post-it notes others have left on your pages. Talk about how these notes can be incorporated into your root causes.

What else do we **need to learn** to help us design innovative strategies?

What else do we need to learn?

1. Think about what questions your group still needs answered before moving to design effective strategies
2. Think about what other information or data your group needs.
3. Think about what else your group needs to learn.

Next Steps

1. We will be sending you a **follow-up email** with information about how you can become involved in efforts moving forward.
2. Feel free to contact us with questions or comments.
3. Please fill out an evaluation form before you leave.